



WEATHERPROOF ENCLOSURES

Data Specification **2023**



AUSTRALIA WIDE DELIVERY
Expedited delivery to all states in Australia



SAME DAY DISPATCH
Orders prior to 12PM will be dispatched the same day



5 YEAR WARRANTY
You can get a trusted 5 Year In House Warranty with CSC

[DESCRIPTION]

Connected Switchgear provides a variety of adaptable weatherproof enclosure styles and IP ratings to suit a wide range of applications. Base material is UV stable and flame-retardant ABS with Polycarbonate covers. All products come supplied with a mounting kit and optional internal mounting plates are available.

[FEATURES]

- Up to IP65 Rating
- UV Stable
- Flame Retardant Material
- Includes Mounting Kit
- Grey or Clear Covers
- Screw or Hinge Type Cover
- Lockable
- Optional Internal Mounting Plates

[TECHNICAL PARAMETERS]

- UV Stable and Flame Retardant ABS Bases
- Polycarbonate Covers
- -40 to 100C Degrees Temp Rating
- AC 415V/DC 1000V

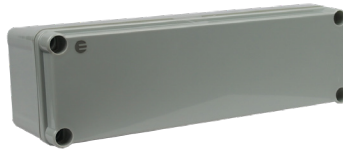
[COMPLIANCE]

AS/NZS 6067.1:2021

[IMAGES]



WEK15011070



WE2508085



WEC17014095



WEH400300180



WEHC300300180

WEATHERPROOF ENCLOSURES

[SPECIFICATIONS]

WEK Series

Product Code	Dimensions HxWxD	IP Rating	Cover Type	Cover Colour	Optional Mounting Plate
WEK858550	85x85x50	IP55	Screw	Grey	No
WEK10010070	100x100x70	IP55	Screw	Grey	No
WEK15011070	150x110x70	IP55	Screw	Grey	No
WEK20010070	200x100x70	IP55	Screw	Grey	No

***WEK Series made from Flame Retardant + UV Stable ABS material**

**** Stainless Steel Cover Screws**

Lockable WEK Series

Product Code	Dimensions HxWxD	IP Rating	Cover Type	Cover Colour	Optional Mounting Plate
WEH15015090	150x150x90	IP66	Hinged	Grey	Yes
WEH300200130	300x200x130	IP66	Hinged	Grey	Yes
WEH300300180	300x300x180	IP66	Hinged	Grey	Yes
WEH400300180	400x300x180	IP66	Hinged	Grey	Yes
WEHC15015090	150x150x90	IP66	Hinged	Clear	Yes
WEHC220170110	220x170x110	IP66	Hinged	Clear	Yes
WEHC300300180	300x300x180	IP66	Hinged	Clear	Yes
WEHC350250150	350x250x150	IP66	Hinged	Clear	Yes

***WEH Series made from Flame Retardant ABS Base , Polycarbonate Cover**

**** Hinged Cover with Metal Clasps**

WEATHERPROOF ENCLOSURES

[SPECIFICATIONS]

WE Series

Product Code	Dimensions HxWxD	IP Rating	Cover Type	Cover Colour	Optional Mounting Plate
WE655550	65x55x50	IP66	Screw	Grey	No
WE10010075	100x100x75	IP66	Screw	Grey	Yes
WE1108070	110x80x70	IP66	Screw	Grey	Yes
WE12512575	125x125x75	IP66	Screw	Grey	Yes
WE125125100	125x125x100	IP66	Screw	Grey	Yes
WE1308085	130x80x85	IP66	Screw	Grey	Yes
WE17014095	170x140x95	IP66	Screw	Grey	Yes
WE175125100	175x125x100	IP66	Screw	Grey	Yes
WE1808070	180x80x70	IP66	Screw	Grey	Yes
WE20015075	200x150x75	IP66	Screw	Grey	Yes
WE20020095	200x200x95	IP66	Screw	Grey	Yes
WE2508085	250x80x85	IP66	Screw	Grey	Yes
WE250150100	250x150x100	IP66	Screw	Grey	Yes
WE250150130	250x150x130	IP66	Screw	Grey	Yes
WE280190130	280x190x130	IP66	Screw	Grey	Yes
WE280190180	280x190x180	IP66	Screw	Grey	Yes
WE280280130	280x280x130	IP66	Screw	Grey	Yes
WE280280180	280x20x180	IP66	Screw	Grey	Yes
WE340280130	340x280x130	IP66	Screw	Grey	Yes
WE340280180	340x280x180	IP66	Screw	Grey	Yes
WE380280130	380x280x130	IP66	Screw	Grey	Yes
WE380280180	380x280x180	IP66	Screw	Grey	Yes
WEC125125100	125x125x100	IP66	Screw	Clear	Yes
WEC1308070	130x80x70	IP66	Screw	Clear	Yes
WEC17014095	170x14x95	IP66	Screw	Clear	Yes
WEC200200130	200x200x130	IP66	Screw	Clear	Yes
WEC2508085	250x80x85	IP66	Screw	Clear	Yes
WEC250150130	250x150x130	IP66	Screw	Clear	Yes
WEC280190130	280x190x130	IP66	Screw	Clear	Yes
WEC340280130	340x280x130	IP66	Screw	Clear	Yes

*WE Series made from Flame Retardant + UV Stable ABS Base, Polycarbonate Cover

** Stainless Steel Cover Screws

WEATHERPROOF ENCLOSURES

[SPECIFICATIONS]

Internal Mounting Plates

Product Code	Dimensions HxWxD	Series to Fit
PWE11080	110x80x6	To suit WE Series
PWE13080	130x80x6	To suit WE Series
PWE125125	125x125x6	To suit WE Series
PWE170140	170x140x6	To suit WE Series
PWE175125	175x125x6	To suit WE Series
PWE18080	180x80x6	To suit WE Series
PWE200150	200x150x6	To suit WE Series
PWE200200	200x200x6	To suit WE Series
PWE25080	250x80x6	To suit WE Series
PWE250150	250x150x6	To suit WE Series
PWE280190	280x190x6	To suit WE Series
PWE280280	280x280x6	To suit WE Series
PWE340280	340x280x6	To suit WE Series
PWE380280	380x280x6	To suit WE Series
PWEH150150	150x150x6	To suit WEH Series
PWEH220170	220x170x6	To suit WEH Series
PWEH300200	300x200x6	To suit WEH Series
PWEH300300	300x300x6	To suit WEH Series
PWEH350250	350x250x6	To suit WEH Series
PWEH400300	400x300x6	To suit WEH Series

[WARRANTY]

Connected Switchgear weatherproof enclosures come with a trusted 5 Year In House Warranty. That means that you have peace of mind knowing that if a fault develops within a five year period, Connected Group Australia will cover the cost of replacing the product and it's installation.*

* See our website for full terms and conditions www.connectedswitchgear.com.au

WEATHERPROOF ENCLOSURES