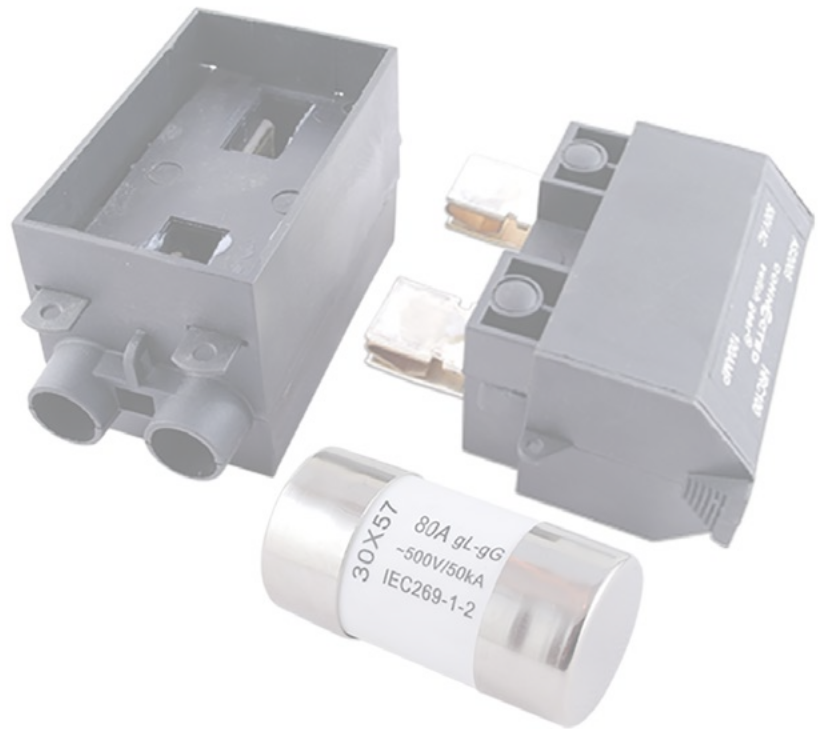




ENCLOSURE ACCESSORIES

SERVICE FUSES

Data Specification **2020**



AUSTRALIA WIDE DELIVERY
Expedited delivery to all states in Australia



SAME DAY DISPATCH
Orders prior to 12PM will be dispatched the same day



5 YEAR WARRANTY
You can get a trusted 5 Year In House Warranty with CSG

[DESCRIPTION]

Connected Switchgears' High Rupture Capacity Ferrule type main fuse assemblies are available in either front or backwired models with the option of a 22mm or 30mm diameter fuse link carrier. They come complete with an 80A or 100A fuse link and an anti-intrusion barrier. All HRC assemblies are rated at 500V AC 100A to comply with State Installation Rules.

[FEATURES]

- Front or Back Wired
- 22mm or 30mm Fuse Link Carrier
- 80A or 100A Fuse Links
- Fuse Links Available Separately
- Anti-Intrusion Barrier

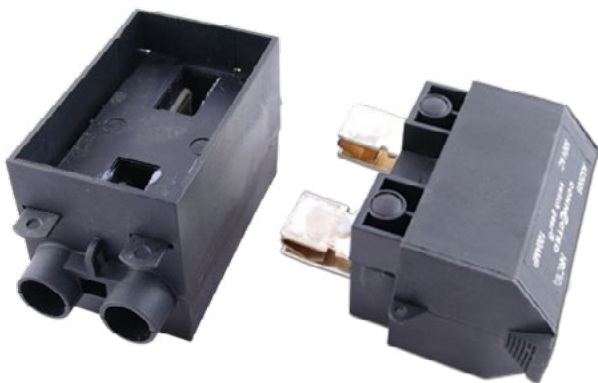
[TECHNICAL PARAMETERS]

- Rated Voltage: 500V AC
- Rated Frequency: 50/60Hz
- Rated Amperage: 100A

[COMPLIANCE]

- AS/NZS 60269:2005

[IMAGES]



HRC80

FM80

[SPECIFICATIONS]

Product Code	Description	Type	Max Rated Current Base & Carrier	Voltage (V)	Rated Amperage HRC Fuse	Fuse Diameter
HRC80	HRC Ferrule + Fuse	Back Wired	100A	500V	80A	30 x 57mm
HRC80FW	HRC Ferrule + Fuse	Front Wired	100A	500V	80A	30 x 57mm
HRC100	HRC Ferrule + Fuse	Back Wired	100A	500V	100A	30 x 57mm
HRC100FW	HRC Ferrule + Fuse	Front Wired	100A	500V	100A	30 x 57mm
HRC80-22	HRC Ferrule + Fuse	Back Wired	100A	500V	80A	22 x 57mm
HRC80FW-22	HRC Ferrule + Fuse	Front Wired	100A	500V	80A	22 x 57mm
HRC100-22	HRC Ferrule + Fuse	Back Wired	100A	500V	100A	22 x 57mm
HRC100FW-22	HRC Ferrule + Fuse	Front Wired	100A	500V	100A	22 x 57mm
FM80	Fuse Only	-	-	500V	80A	30 x 57mm
FM100	Fuse Only	-	-	500V	100A	30 x 57mm

[TIME CURRENT CURVE]

Figure 1

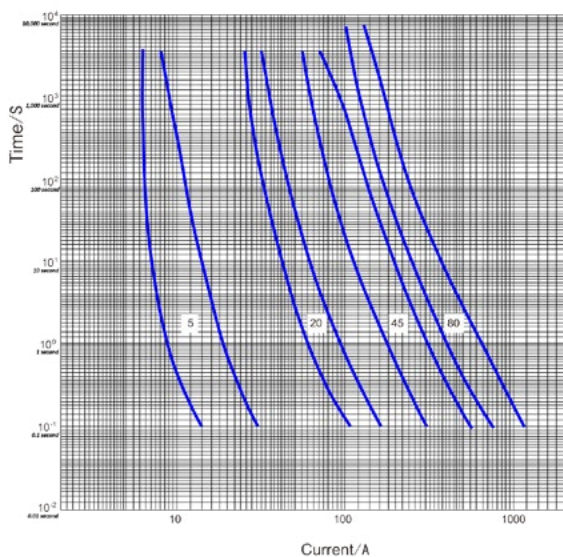
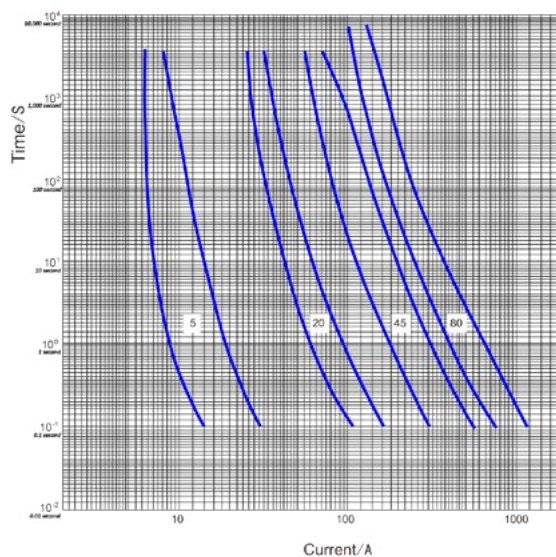


Figure 2



[WARRANTY]

Connected Switchgear service fuses come with a trusted 5 Year In House Warranty. That means that you have peace of mind knowing that if a fault develops within a five year period, Connected Group Australia will cover the cost of replacing the product and it's installation.*

* See our website for full terms and conditions www.connectedswitchgear.com.au